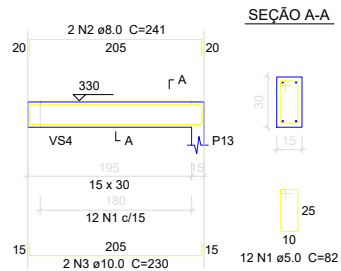
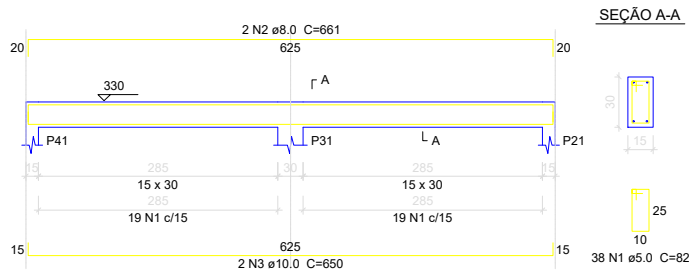


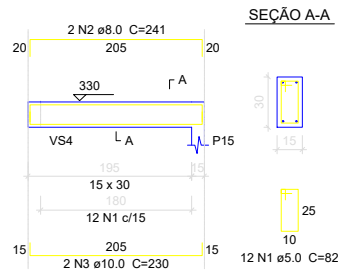
VS11



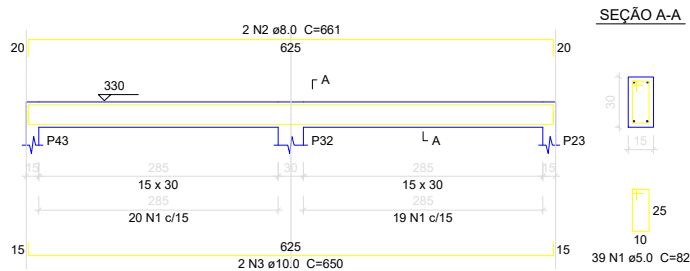
VS12



VS13



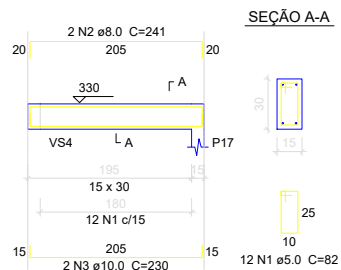
VS14



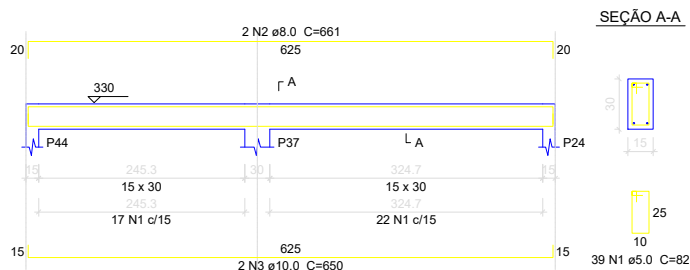
VIGA SUPERIOR

ESC: 1/180

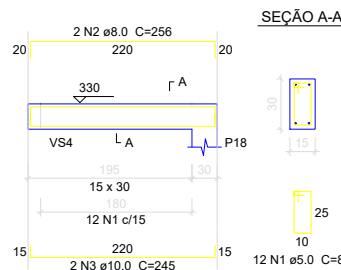
VS15



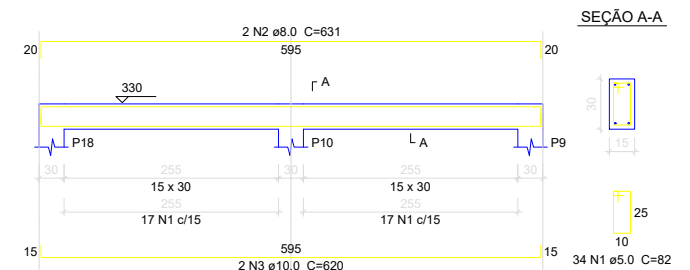
VS16



VS17



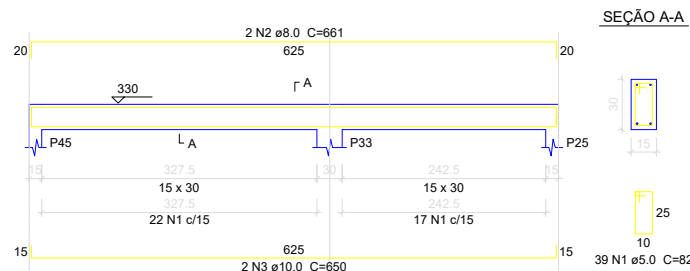
VS18



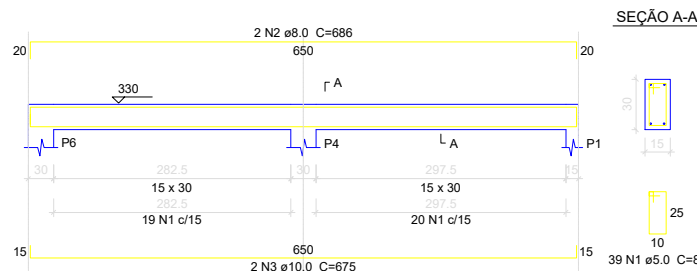
VIGA SUPERIOR

ESC: 1/180

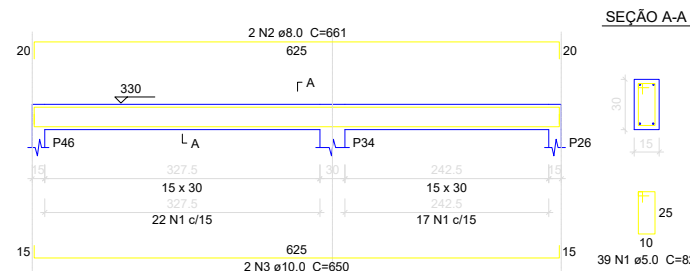
VS19



VS20



VS21



VIGA SUPERIOR

ESC: 1/180

Relação do aço

ELEMENTO	AÇO	N	DIAM	Q	UNIT (cm)	C.TOTAL (cm)
VS1	CA60	1	5.0	35	82	2870
	CA50	2	8.0	2	625	1250
	CA50	3	10.0	2	614	1228
VS2	CA60	1	5.0	36	82	2952
	CA50	2	8.0	2	625	1250
	CA50	3	10.0	2	614	1228
VS3	CA60	1	5.0	150	82	12300
	CA50	2	8.0	2	1198	2396
	CA50	3	8.0	2	1135	2270
VS4	CA50	4	8.0	2	188	376
	CA50	5	10.0	2	812	1624
	CA50	6	10.0	2	1177	2354
VS5	CA50	7	10.0	2	401	802
	CA60	1	5.0	192	82	15744
	CA50	2	8.0	2	1198	2396
VS6	CA50	3	8.0	2	1200	2400
	CA50	4	8.0	2	855	1710
	CA50	5	10.0	2	828	1656
VS7	CA50	6	10.0	2	1137	2274
	CA50	7	10.0	2	1137	2274
	CA60	1	5.0	9	82	738
VS8	CA50	2	8.0	2	196	392
	CA50	3	10.0	2	185	370
	CA60	1	5.0	17	82	1394
VS9	CA50	2	8.0	2	311	622
	CA50	3	10.0	2	300	600
	CA60	1	5.0	10	82	820
VS10	CA50	2	8.0	2	211	422
	CA50	3	10.0	2	200	400
	CA60	1	5.0	200	82	16400
VS11	CA50	2	8.0	2	1198	2396
	CA50	3	8.0	2	1200	2400
	CA50	4	8.0	2	973	1946
VS12	CA50	5	10.0	2	978	1956
	CA50	6	10.0	2	1135	2270
	CA50	7	10.0	2	1138	2276
VS13	CA60	1	5.0	50	82	4100
	CA50	2	8.0	2	856	1712
	CA50	3	10.0	2	845	1690
VS14	CA60	1	5.0	38	82	3116
	CA50	2	8.0	2	661	1322
	CA50	3	10.0	2	650	1300
VS15	CA60	1	5.0	12	82	984
	CA50	2	8.0	2	241	482
	CA50	3	10.0	2	230	460
VS16	CA60	1	5.0	38	82	3116
	CA50	2	8.0	2	661	1322
	CA50	3	10.0	2	650	1300
VS17	CA60	1	5.0	12	82	984
	CA50	2	8.0	2	241	482
	CA50	3	10.0	2	230	460
VS18	CA60	1	5.0	39	82	3198
	CA50	2	8.0	2	661	1322
	CA50	3	10.0	2	650	1300
VS19	CA60	1	5.0	12	82	984
	CA50	2	8.0	2	256	512
	CA50	3	10.0	2	245	490
VS20	CA60	1	5.0	34	82	2788
	CA50	2	8.0	2	631	1262
	CA50	3	10.0	2	620	1240
VS21	CA60	1	5.0	39	82	3198
	CA50	2	8.0	2	661	1322
	CA50	3	10.0	2	650	1300
VS22	CA60	1	5.0	39	82	3198
	CA50	2	8.0	2	686	1372
	CA50	3	10.0	2	675	1350
VS23	CA60	1	5.0	39	82	3198
	CA50	2	8.0	2	675	1350
	CA50	3	10.0	2	650	1300
VS24	CA60	1	5.0	38	82	3116
	CA50	2	8.0	2	686	1372
	CA50	3	10.0	2	675	1350

Resumo do aço

AÇO	DIAM	C.TOTAL (m)	PESO (kg)
CA50	8.0	418.4	165.1
CA50	10.0	404.2	249.2
CA60	5.0	987.3	152.2
PESO TOTAL			
CA50	414.3		
CA60	152.2		

Vol. de concreto total (C-25) = 8.91 m³
Área de forma total = 148.46 m²



PREFEITURA MUNICIPAL DE VÁRZEA GRANDE
Av. Castelo Branco, Espaço Municipal, 2500 - Centro Sul, Várzea Grande/MT
CEP 78125-700 - Fone/Fax: 65 3688 8000

LOCALIZAÇÃO:
AVENIDA PRINCIPAL, DISTRITO DA PASSAGEM DA CONCEIÇÃO
VÁRZEA GRANDE - MT

PROJETO:
PROJETO ESTRUTURAL

OBRA:
REFORMA E AMPLIAÇÃO DA EMEB DR. JOÃO PONCE DE ARRUDA

DATA:
AGOSTO/2022

UNIDADE:
METRO

AUTOR DO PROJETO:

GUILHERME SIMPLÍCIO DIAS
ENGENHEIRO CIVIL CREA - MT 36575

ÁREAS:
-ÁREA DO TERRENO: 1.651,58m²
- ÁREA CONS. EXIS: 380,13m²
-ÁREA DE DEMOLIÇÃO: 178,957m²
-ÁREA DE AMPLIAÇÃO:370,00m²
- ÁREA CONSTRUÍDA FINAL: 571,18m²

FOLHA Nº:
12/13